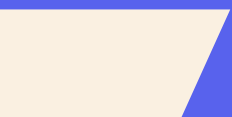


2023

2024

---



*INTERNATIONAL*

EXCHANGE  
STUDENT  
GUIDE

**fasest**



Université  
de Lille

## GETTING TO KNOW OUR FACULTY

---

Greetings from the Vice Dean for International Affairs	3
Welcome to Lille!	4
The University of Lille : the French University for North West Europe!	4
Faculty of Economics, Social Sciences, Geography and Planning	5
Our institutes	6
Location and access	7 / 8
Your mobility step-by-step	9 / 10
<ul style="list-style-type: none"> <li>• Before mobility</li> <li>• During mobility</li> <li>• After mobility</li> </ul>	

## PLANNING YOUR STUDIES

---

Grading scale & academic calendar	11
French language courses	12
Supervised research methods in French and English (conférence de méthode)	12

## MAKING THE MOST OF YOUR EXPERIENCE

---

Student support and daily life	
<ul style="list-style-type: none"> <li>• Student card / Accommodation / University restaurant / Health insurance</li> <li>• Cost of living / Visa / Wifi / Emergency contacts</li> </ul>	13 13 14 / 15

## CONNECTING WITH US!

---

The international relations office - Team and contacts	16
Campus maps	17



« It is my pleasure to welcome you at the Faculty of Economics, Social Sciences, Geography and Planning. We offer our students a wide and diverse range of academically rigorous study programs at the Master's and Bachelor's levels ranging from Economics and Management to Sociology, Cultural Studies, Geography and Urban Planning. Our large body of professors and researchers is involved in outstanding research and collaboration with private, public and international institutions. Graduates from our Faculty have been appointed in leading positions in France and internationally.

The internationalization of our courses and students is a strategic priority of the Faculty. We have invested in this way by significantly developing student mobility, courses in English, international double degree programs, an office dedicated to international students and other innovative international projects. Each year, we are pleased to welcome more than 1000 international students from all over the world who contribute to the cultural diversity of our Faculty. We encourage and support our students in the process of studying and working abroad to increase their intercultural openness and language skills.

It is my hope that you take the opportunity to attend and participate in the Faculty's research forums and seminars that we offer to our students and the wider community. It is my hope that your stay with us will be both productive and enjoyable. »

Michael BREI  
Vice Dean for International Affairs

# GETTING TO KNOW OUR FACULTY

---

Welcome to Lille

The University of Lille : the French University for North West Europe!

Lille is located in the triangle London-Paris-Brussels and offers a truly European experience to all international students. With affordable housing and cost of living compared to other major European capitals, Lille is a student city, with a young and dynamic population and a vibrant cultural scene.

The University of Lille attracts many students thanks to a dynamic academic environment enriched by the proximity of international universities ranked among the best in the world.

The students enjoy excellent study conditions across the large campuses that offer numerous associative and cultural facilities. They have access to modern international-standard university residences, up-to-date libraries equipped with facilities for new ways of learning using digital technologies, as well as a highly developed rich and varied cultural calendar (cinema, exhibitions, theatres...)



## KEY FIGURES

---

67 000 students  
with 7 300  
international students  
& 1800 PhD students

24 Faculties

67 Research units

6300 Staff

90% Integration  
rate into the job  
market following  
a Master's degree



# GETTING TO KNOW OUR FACULTY

---

## Faculty of Economics, Social Sciences, Geography and Planning

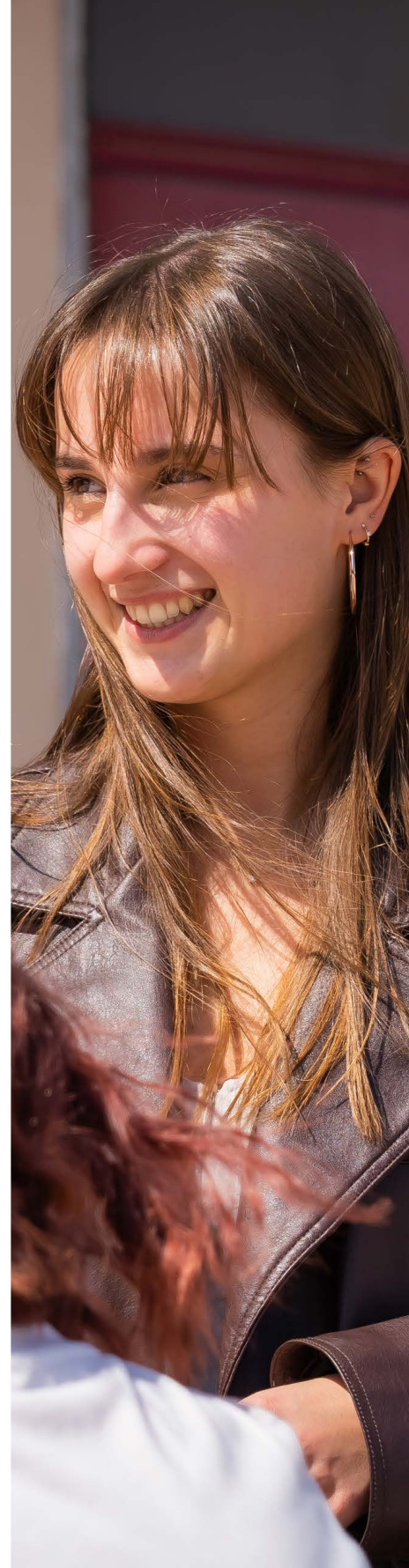
The Faculty of Economics, Social Sciences, Geography and Planning arose from a merger of five major divisions of the University of Lille. It was created to offer students a diverse range of courses in humanities, social sciences, urban planning, geography and economics management.

At the time of its creation in September 2021, it hosted more than 6,000 undergraduate and graduate students along with students in continuing and professional education, with a multi-disciplinary offer of Bachelor's and Master's programmes, comprising more than 60 study programmes. It provides academic and vocational teaching at the highest level, combining theory and practice, with more than 300 teachers, lecturers, researchers and guest practitioners.

The Faculty hosts three institutes: the Institute of Economics and Management, the Institute of Social Sciences and the Institute of Geography and Planning.

### What we offer...

- A large range of Bachelor's and Master's programmes with 6 international programmes taught in English
- Doctoral programmes
- 90 courses offered in English
- 100 incoming exchange students from all over the world welcomed every year
- An International Relations Office and Erasmus coordinators are at your disposal to daily assist you in your administrative and academic procedures
- Free French language courses for international students (2 hours of French lessons per week and an intensive French language courseover week at the beginning of each semester)
- A Buddy system to welcome you on board and the Erasmus student Network (ESN) Association are available to facilitate your arrival in Lille and organize trips in Europe with international students
- A module designed for exchange students on Supervised Research Methods (Conférence de méthode) in which international students engage in collaborative learning, research and presentation focused on current economic issues. The module values 6 ECTS each semester.



# GETTING TO KNOW OUR FACULTY

---

## Our institutes

### THE INSTITUTE OF ECONOMICS AND MANAGEMENT

The Institute provides outstanding academic and professional higher education in Economics, Management, and Statistics combining theory, practice, research, and job training. It benefits from recognized experience and expertise, leading students to effective and fast labour market integration.

- 3500 Bachelor's and Master's students
- 90 PhD students
- 125 faculty members and 200 guest lecturers
- 41 study programmes from Bachelor's to PhD level
- 3 research units : LEM – CLERSE – RIME LAB

### THE INSTITUTE OF SOCIAL SCIENCES

The Institute provides high quality academic and professional higher education in sociology, anthropology, demography and cultural studies, combining theory, practice, research and professional training. It has a proven track record and expertise, leading to effective and rapid integration of students into the labour market.

- 2000 undergraduate, graduate and PhD students
- 60 faculty members and 50 professionals
- 17 study programs from the Bachelor to the PhD level
- 3 research units : CLERSE – CeRIES – GERIICO

### THE INSTITUTE OF GEOGRAPHY AND PLANNING

The Institute offers a diverse range of training courses based on dynamic research.

With around thirty teacher-researchers gathered in the TVES (Territoires, Villes, Environnement & Société) laboratory, the department offers training courses to prepare for careers in research, teaching in the field of Urban planning and Geography.

- 550 Bachelor's and Master's students
- 37 PhD students
- 30 faculty members
- 12 study programmes from Bachelor's to PhD level
- 1 research units : TVES

# GETTING TO KNOW OUR FACULTY

## Location, access and transport

### How to get to Lille

Lille is connected to Paris, London, Brussels, and Amsterdam by a fast-train system (Eurostar, TGV, Thalys, ICE and more). This means that you can travel from Lille to many locations in Europe. For example, it takes only about an hour to get to London and Paris. There are also a number of airports that connect you with Lille from distant places : Lille, Paris, Brussels, Charleroi...

For students coming from Paris, here are some simple options that you can look into for the travel to Lille :

- If you arrive in Paris Charles de Gaulle (CDG): there is a train that goes directly from Terminal 2 to Lille. See the website of the SNCF for the ticket.
- If you arrive in Paris Orly : you will have to take the ORLYVAL, then the metro in order to arrive at the "Gare du Nord". From there, take direct train to Lille (more information you can find in the survival guide). Do not hesitate to ask your ESN buddy system for help !

There are two train stations in Lille. From these stations you can take the subway to Cité Scientifique (line 1 in yellow).





## *GETTING TO KNOW OUR FACULTY*

---

Location, access and transport

How to get to our Faculty / International Office

### **Address :**

Faculty of Economics, Social Sciences, Geography and Planning

International Relations Office  
Building SH3 – Office C017 (ground floor)  
Campus Cité scientifique  
59650 Villeneuve d'Ascq

### **Opening hours :**

Monday : morning closed / 13:30-16:30  
Tuesday : 08:00 - 12:00 / 13:30-16:30  
Wednesday : 08:00 - 12:00 / 13:30-16:30  
Thursday : 08:00 - 12:00 / 13:30-16:30  
Friday : 08:00 - 12:00 / afternoon : closed





# GETTING TO KNOW OUR FACULTY

---

## Your mobility step-by-step

### Before mobility

- Make sure that you are registered in our partner University. The International Office of your home University will know whether we have an exchange contract
- Be nominated by your home University via e-mail. Once we receive your nomination, we will send you the online application procedure.

### Application procedure

- Complete the [online application](#) form before the deadline. To finalize your application, you must have completed a learning agreement by choosing the courses you want to study in our Faculty. You must use the online learning agreement tool following our guideline.
- Once your application to the Faculty of Economic, Social Sciences, Geography and Planning is accepted, you will receive an admission notice via e-mail (acceptance letter and information package)
- [Prepare your arrival](#)

### Required documents for application

Identity photo  
Passport or identity card  
Academic transcript of records  
Learning agreement

### Application deadlines

Fall semester : 15th May  
Sprint semester : 1st November



# GETTING TO KNOW OUR FACULTY

---

## Your mobility step-by-step

### *During mobility*

- Once you arrive in Lille, please visit our International Office located in building SH3 – office C017 ([see map](#)). We will help you with administrative procedures and provide you a student card and registration certificate.
- Complete your learning agreement and register to courses. Please note that you can only make the final choice of courses and fill in your final learning agreement once the course schedules are up-dated. The course schedules will be published in September for the fall semester and in December for the spring semester. After arrival you will have to submit your course registration before the deadlines to [international-fasest@univ-lille.fr](mailto:international-fasest@univ-lille.fr)

### *After mobility*

- An academic transcript of records will be issued after your examination period and sent directly to your home coordinator with our grading scale system.
- A certificate of attendance will be signed upon request.



# PLANNING YOUR STUDIES

---

## Grading scale

SCALE AT THE UNIVERSITY OF LILLE 0-20	ECTS Grading scale	DEFINITION
14.50 – 20	A	<b>Excellent</b> Outstanding performance with only minor errors
12.50 –14.49	B	<b>Very good</b> Above the average standard but with some errors
11 – 12.49	C	<b>Good</b> Generally sound work with a number of notable errors
10.50 –10.99	D	<b>Satisfactory</b> Fair but with significant shortcomings
10 – 10.49	E	<b>Sufficient</b> Performance meets the minimum criteria
8 – 9.99	FX	<b>Fail</b> Some more work required before credit can be awarded
0 – 7.99	F	<b>Fail</b> Considerable further work is required

### *Provisional Academic Calendar :*

Autumn term : from 23/08/2023 to 12/01/2024

Spring term : from 15/01/2024 to 31/08/2024

### *Provisional Calendar of Holidays :*

Autumn : from 28/10/2023 to 05/11/2023

Christmas : from 23/12/2023 to 07/12/2023

Winter : from 24/02/2024 to 03/03/2024

Spring : from 21/04/2024 to 05/05/2024

## PLANNING YOUR STUDIES

---

### *French language courses*

The University of Lille offers French courses for international students (intensive preparation at your arrival and weekly courses during the semester). These courses are free of charge and organized every semester. They value 2 ECTS. The courses take place at the Maison des Langues on the Cité Scientifique campus (see map).

For more information, contact :  
[exchange-helpdesk@univ-lille.fr](mailto:exchange-helpdesk@univ-lille.fr)

### *Supervised research methods in French and English (conférence de méthodes)*

Our Faculty offers to all exchange students the module "Conférence de méthode".

It is a group work consisting of collaborative learning, research and presentation on current economic issues. Each group has to submit and present a research report. This module is organized every semester (in French and English) and it values 6 ECTS. We recommend international students to register for this module because it is a perfect opportunity to get to know other international students, and this, in a joint research team.





## *MAKING THE MOST OF YOUR EXPERIENCE*

---

### Student support and daily life

#### Student Card

After being registered, we will provide you a student card. You can use it to borrow books at Lilliad Learning Center, access sport facilities and pay for your meals in the University Restaurant. You will receive e-mail notifications in order to activate your ULille and Izly accounts soon after registration. It is very important to activate these accounts in order to receive all useful e-mail correspondence from the University, to access Wifi and to pay your meal at the University Restaurant.

#### Accommodation

The University of Lille manages a number of student residences from €150 to €400 per month. The accommodation request is done when you fill in your application form for the exchange program. However, the reception capacity in the University Residences is limited and not all requests can be retained. Home insurance is mandatory for any type of housing. If you are staying in a University Residence, proof of this insurance must be provided shortly after your arrival.

#### University Restaurant

The University catering service, run by CROUS, offers a wide range of menus. Traditional dishes are served in the University Restaurants (RU), with meals priced at €3.30 (1 course + 3 side dishes). University restaurants are open from Monday to Friday, at lunch-time and in the evening. A wide range of other options are also on offer, including lunch bags, bar food, sandwiches, pizzas, salads, fresh pasta, etc. The University cafés serve a wide range of fast food at reasonable prices, with flexible opening hours to suit students. You need to recharge your student card beforehand via the Izly app for your smartphone or online to pay your meal at the University.

#### Health insurance

Before arriving in France, you have to justify a social security affiliation or a private insurance coverage. It must cover your medical expenses during your stay in France. For European students, you have to bring your [European Health Insurance Card](#).

# MAKING THE MOST OF YOUR EXPERIENCE

---

## Living costs

Some of the below-mentioned prices are estimates, which may vary depending on each student's way of life.

### Accommodation

University residence	250-450 € / month
Private studio	350-650 € / month
House insurance	60 € / year

### Food

University restaurant	3,30 €
Restaurant	10-25 €
Coffee	2-3 €
Fast food	5-10 €

### Leisure

Cinema	9-15 €
Bowling	4-6 €
Swimming pool	3-5 €
Theater	10 €

### Transportation

Subway (1 hour ticket)	1,80 €
Subway monthly subscription (<25 years old)	31 €
Train Lille-Paris	20-50 €

## Visa for non-European students

All non-European students need a long stay visa for studies "type D".

The visa "type C" for tourism cannot under any circumstances be transformed as a residence permit in France. Therefore, the visa type D is necessary and mandatory.

In order to apply for student visa, you have to [contact the French consulate or embassy in your home country.](#)

# MAKING THE MOST OF YOUR EXPERIENCE

---

## Wifi connection

Our Campus has a Wifi coverage within the eduroam network. If your home institution is an eduroam partner, you can use your personal login details issued by your home institution. Otherwise, you must wait for your ULille registration for the login.

In order to login into eduroam you have to first install eduroam CAT on your device and follow [the guidelines](#).

## Emergency contacts

**EMERGENCY MEDICAL SERVICES (SAMU)** : Dial 15 to obtain the intervention of a medical team during a life-threatening situation.

**POLICE** : Dial 17 to report an offense that requires the immediate intervention of the police.

**FIRE DEPARTMENT (SAPEURS POMPIERS)** : Dial 18 to report a situation of danger, fire or an accident concerning goods or people and to get their quick intervention.



# CONNECTING WITH US!

---

## Team and contacts

### **Mobility coordinators**

#### **Michael Brei**

Interim mobility coordinator in economics and management  
(Campus – Cité scientifique)  
michael.brei@univ-lille.fr

#### **Anne Bory**

Mobility coordinator in sociology and anthropology  
(Campus – Cité scientifique)  
anne.bory@univ-lille.fr

#### **Philippe Cardon**

Mobility coordinator in sociology and anthropology  
(Campus – Pont de Bois)  
philippe.cardon@univ-lille.fr

#### **Fabienne Duszynski**

Mobility coordinator in culture and communication  
(Campus - Pont de bois)  
fabienne.duszynski@univ-lille.fr

#### **Pauline Bosredon**

Mobility coordinator in geography and urban planning  
(Campus – Cité scientifique)  
pauline.bosredon@univ-lille.fr

### **Administrative staff**

#### **Eric Sury**

Assistant Mobility Coordinator  
Contact person for incoming students  
incoming-fasest@univ-lille.fr  
Phone : +33 3 62 26 85 73

#### **Thomas Heckly**

Head of the International Relations





# CONNECTING WITH US!

## Campus Maps

You will find hereafter the link to the campus map:  
<https://fasest.univ-lille.fr/venir-a-la-faculte>

**CITÉ**

**SCIENTIFIQUE**



**PONT**

**DE BOIS**



*Campus Cité scientifique  
Campus Pont de Bois  
59650 Villeneuve d'Ascq*

